

Obstruction Escalates Insecurity for Family Farms

Written by Wisconsin Senate, Kate Constalie
Thursday, 07 November 2019 10:10

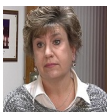
<http://newiproggressive.com/images/stories/S5/brad-pfaff1-s5.jpg>



Amid Dairy Crisis, Republicans Reject Ag Secretary Appointment.

MADISON, WI – Insecurity and uncertainty for Wisconsin family farms was further escalated after Senate Republicans rejected the appointment of Brad Pfaff as Secretary of the Department of Agriculture, Trade and Consumer Protection (DATCP).

Following the vote, Senate Democratic Leader Jennifer Shilling (D-La Crosse) released the following statement:



“Brad was raised on a family farm in western Wisconsin and has dedicated his life to improving outcomes for our farmers. Simply put, farming is in his DNA. At a time when Wisconsin is in the middle of a dairy crisis it is irresponsible and callous for Republicans to reject the appointment of Brad Pfaff. Wisconsin communities are sick and tired of these petty political theatrics. It’s time for Republicans to accept the results of the election last fall.”

Since his nomination in December of 2018, Secretary-designee Pfaff has been an outspoken advocate for farmers by urging action on mental health assistance, rural broadband access, and sustainable land management practices. Through his work for the U.S Department of

Obstruction Escalates Insecurity for Family Farms

Written by Wisconsin Senate, Kate Constalie
Thursday, 07 November 2019 10:10

Agriculture, Farm Service Agency, Pfaff has been a trusted and credible partner of farmers, agribusinesses, and rural communities. U.S. Representative Ron Kind and U.S. Senator [Tammy Baldwin](#) have voiced their support for Pfaff along with the following organizations:

- [National Farmers Organization](#)
- [Trempealeau County Farm Bureau](#)
- [Buffalo County Farm Bureau](#)
- [Dairy Business Association](#)
- [Organic Valley](#)
- [Cooperative Network](#)
- [Wisconsin Cheese Makers Association](#)
- [Wisconsin Agri-Business Association](#)
- [Wisconsin Corn Growers Association](#)